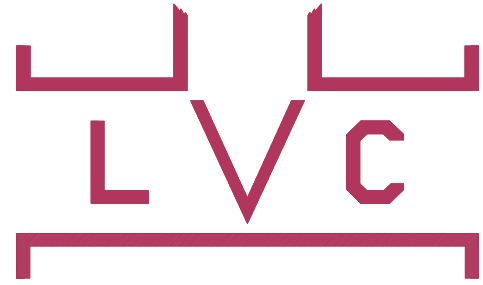


# LINED VALVE COMPANY, INC.

---

## Figure 63 High Performance Polymer Lined Knife Gate Valve



---

## FEATURES

---

**Heavy Duty** fabricated carbon steel or stainless steel body, yoke and packing gland.

**UHMW, PTFE or Polypropylene** liner and seat provide bi-directional tight shutoff.

Three-piece field **replaceable liner/seat**.

Available in standard pressure ratings of **150 psi or 300 psi**. Higher pressure ratings and custom designs also available.

**ANSI B16.5** class 150 or 300 flange bolting.

**MSS-SP81 face-to-face** and flange dimensions.

**Stainless steel gate and stem** for corrosion resistance and durability. Special Alloys, coatings and surface hardening also available.

Superior packing arrangement provides **improved sealing** performance in high cycle applications.

**Full port** inside diameter in all sizes. Custom port sizes and designs available.

Minimum **4 bolt packing gland** design to assure proper gland alignment in all sizes.

Available with manual handwheel, chainwheel, bevel gear, pneumatic/hydraulic cylinder, or electric motor actuator.

Recommended for applications requiring superior corrosion and/or erosion resistance, heavy slurry and high cycle applications.

---

# LINED VALVE COMPANY, INC.

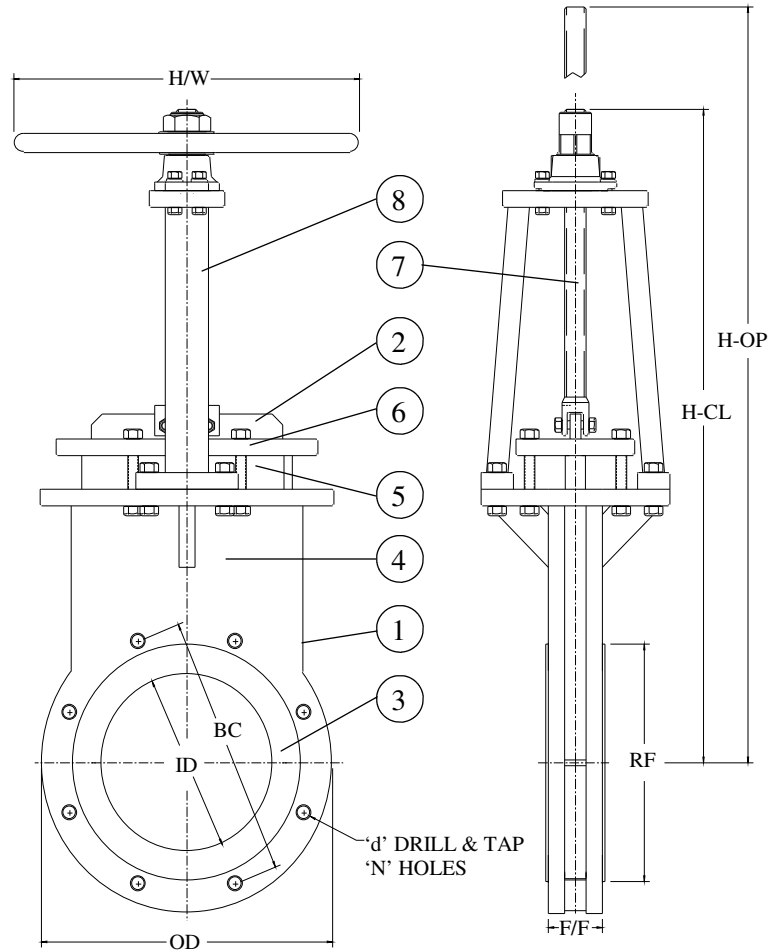
## CARBON STEEL BODY, POLYMER LINED KNIFE GATE VALVE

### Materials of Construction

1 Body	CS/304 SS/316 SS
2 Gate	304 SS/316 SS/Alloy
3 Ret. Rings	304 SS/316 SS/Alloy
4 Liner/Seat	UHMWPE/PTFE/PP
5 Packing	TLSP*/PTFE
6 Packing Gland	CS/304 SS/316 SS
7 Stem	304 SS
8 Yoke	CS/304 SS

\*TLSP = TFE Lubricated Synthetic Packing

Normally supplied with handwheel for manual operation, but can be modified for lever, chainwheel, bevel gear, electric, hydraulic cylinder or pneumatic cylinder operator.



### DIMENSIONS (INCHES) AND WEIGHTS

	SIZE	3"	4"	6"	8"	10"	12"	14"	16"	18"	20"	24"
<b>PORT ID</b>	ID	3"	4"	6"	8"	10"	12"	14"	16"	18"	20"	24"
<b>FACE-TO-FACE</b>	F/F	2"	2"	2-1/4"	2-3/4"	2-3/4"	3"	3"	3-1/2"	3-1/2"	4-1/2"	4-1/2"
<b>BOLT CIRCLE</b>	BC	6"	7-1/2"	9-1/2"	11-3/4"	14-1/4"	17"	18-3/4"	21-1/4"	22-3/4"	25"	29-1/2"
<b>RAISED FACE</b>	RF	5"	6-3/16"	8-1/2"	10-5/8"	12-3/4"	15"	16-1/4"	18-1/2"	21"	23"	27-1/4"
<b>FLANGE OD</b>	OD	7-1/2"	9"	11"	13-1/2"	16"	19"	21"	23-1/2"	25"	27-1/2"	32"
<b># BOLT HOLES</b>	N	4	8	8	8	12	12	12	16	16	20	20
<b>DRILL &amp; TAP</b>	d	5/8"-11	5/8"-11	3/4"-12	3/4"-10	7/8"-9	7/8"-9	1"-8	1"-8	1-1/8"-7	1-1/8"-7	1-1/4"-7
<b>HANDWHEEL OD</b>	H/W	8"	8"	12"	12"	16"	16"	20"	20"	20"	20"	20"
<b>C/L TO TOP - CLS</b>	H-CL	21"	22"	29"	32"	35"	42"	46"	51"	58"	61"	70"
<b>C/L TO TOP - OPN</b>	H-OP	23"	26"	34"	40"	46"	54"	59"	67"	75"	81"	94"
<b>WEIGHT - LBS.</b>		48	60	89	150	210	309	420	554	680	950	1200